

SunWize SW100C

SunWize®

SW Series Solar Modules

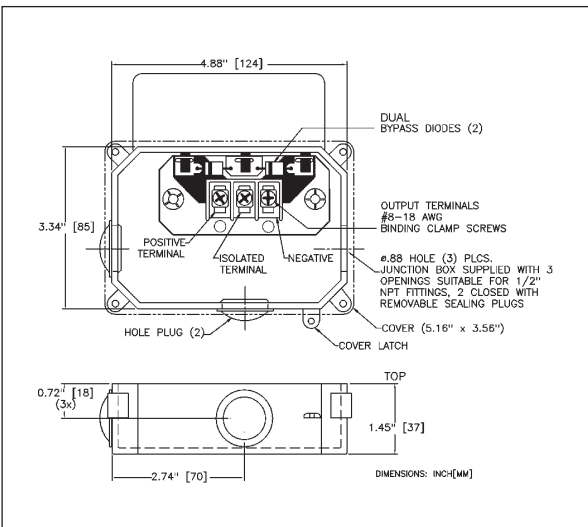
SunWize Solar Modules deliver top-quality performance for all photovoltaic applications including rural electrification, water pumping, telemetry, communications, and general battery charging. SunWize modules can be used in single-module and multiple-module installations. Each module consists of 36 solar cells connected in series (except the SW90/90C/95C/100C which have 48 cells in series), providing maximum charging power.

Features include:

- The glass surface is impact resistant and allows maximum light transmission
- Single crystalline solar cells are encapsulated and bonded to the glass in multiple layers of ethylene vinyl acetate (EVA) and laminated with a white Tedlar™ backing insuring long life in severe environmental conditions
- A weather resistant junction box accommodates all wiring methods including moisture-tight strain relief connectors and electrical conduit. Bypass diodes insure reliable operation
- Anodized aluminum tubular frames add strength and durability to the modules with pre-drilled mounting holes
- UL listed to UL-1703 and cUL listed (except SW90C), FM approved for hazardous locations Class 1 Div. 2 (except SW90C), and ISpra certified to IEC61215. All SunWize modules carry a limited 25-year, 80% power output warranty

Part #	Model	Watts	Vmp	Imp	Voc	Isc	Max. Fuse Rating	Dimensions	Weight
103050SW50A	SW50A	50	16.4	3.05	21.0	3.40	9A	35.1 x 22.6 x 1.3	13.2
103055SW55A	SW55A	55	16.7	3.30	21.0	3.65	9A	35.1 x 22.6 x 1.3	13.2
103060SW60A	SW60A	60	16.7	3.60	21.0	3.95	9A	35.1 x 22.6 x 1.3	13.2
103060SW60	SW60	60	16.7	3.60	21.0	3.95	9A	39.4 x 19.7 x 1.3	13.7
103075SW75A	SW75A	75	16.7	4.50	22.5	4.83	10A	50.1 x 23.2 x 1.3	17.6
103090SW90	SW90	90	17.4	5.17	21.4	5.90	10A	56.9 x 22.8 x 1.3	23.0
103090SW90C	SW90C	90	23.0	3.90	28.5	4.45	10A	56.9 x 22.8 x 1.3	23.0
103095SW95C	SW95C	95	22.5	4.23	28.2	4.74	10A	56.9 x 22.8 x 1.3	25.5
103100SW100C	SW100C	100	22.5	4.45	28.2	4.96	10A	56.9 x 22.8 x 1.3	25.5

SW Series Module Junction Box



Mechanical Specifications for SW90/SW90C/SW95C/SW100C

